

LAND CERTIFICATE NO. 55892 COPY

Land Certificate No. 55892 Tulcea

A. Part I. Property description LAND

within the built-up area

Address: Loc. Tulcea, Str PIATA REPUBLICII, Nr. FN, Jud. Tulcea

Item no.	Cadastral number Topographic number	Surface* (sqm)	Observations / References
A1	55892	4,052	Unfenced land;

B. Part II. Owners and documents

Entries regarding property rights and other real rights		References
38143 / 04/04/2024		
Administrative Act no. 13800, dated 03/04/2024 issued by Lupu Daniel;		
B1	Provisional registration, right of PROPERTY according to the provisions of art. 41 para. 5, index 1 of Law no. 7/1996, republished, with subsequent additions and changes, acquired by law	A1
	1) TULCEA MUNICIPALITY, CIF (Fiscal Identification Code): 4321429, public domain	

C. Part III. ENCUMBRANCES.

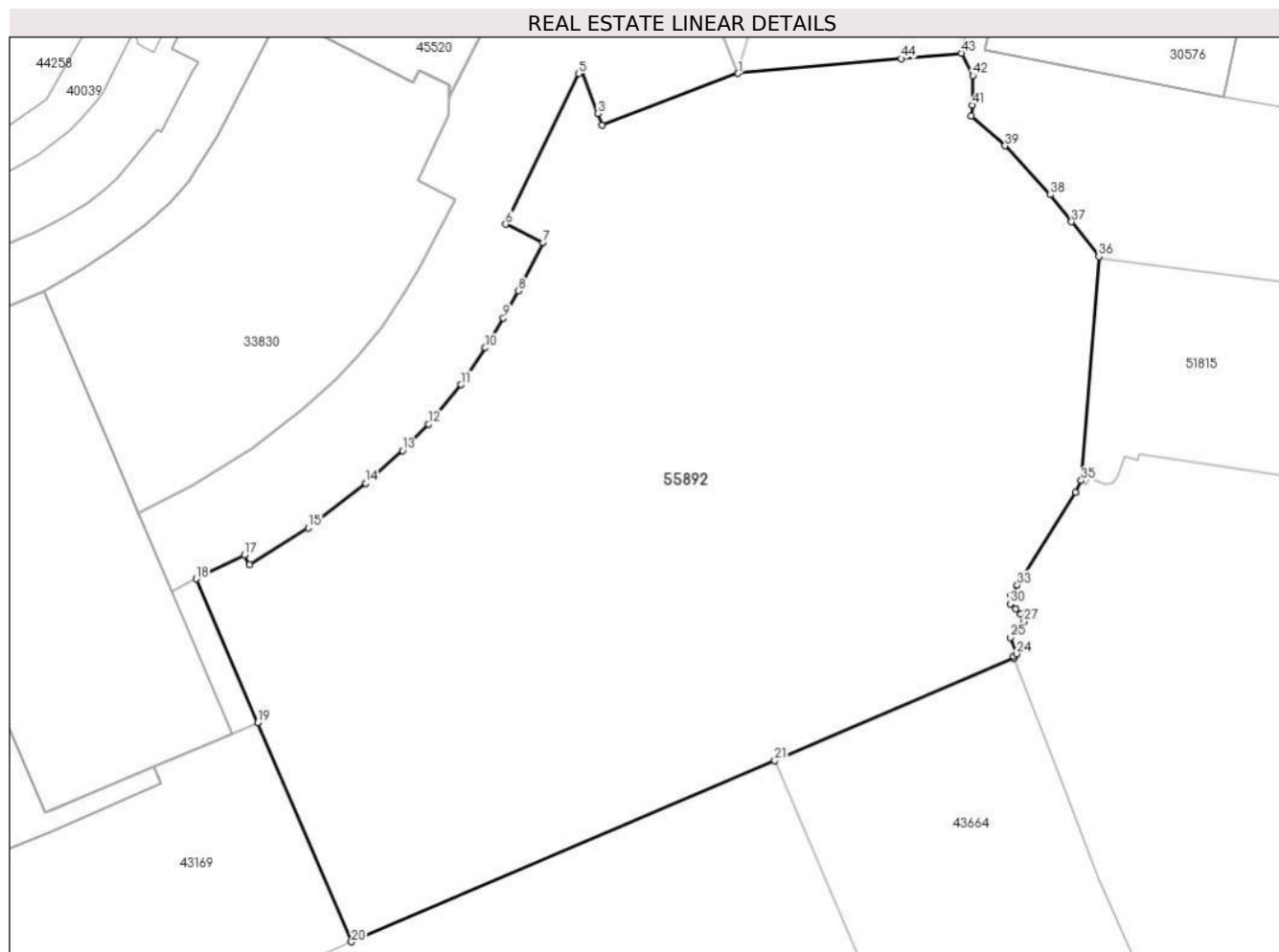
Entries regarding dismemberment of property rights, real rights of guarantee and encumbrances	References
NOT EXISTING	

Annex No. 1 To Part I

Land

Cadastral no.	Surface (sqm)*	Observations / References
55892	4,052	

* The surface is determined in the Stereo 70 projection plane.



Land related data

Item no.	Usage category	Land within the built-up area	Surface (sqm)	Strip land	Lot	Topographical no.	Observations / References
1	road	YES	3,769	-	1	-	
2	road	YES	283	-	2	-	Roundabout

Segments length

1) The segment length values are obtained from the plan projection.

Start point	End point	Segment length	Start point	End point	Segment length	Start point	End point	Segment length
1	2	13,386	2	3	1,138	3	4	4,433
4	5	0,558	5	6	15.4	6	7	3,837
7	8	5,008	8	9	2,847	9	10	3,223
10	11	4.07	11	12	4,705	12	13	3,427
13	14	4,551	14	15	6,698	15	16	6.4
16	17	1.0	17	18	4,929	18	19	14.43
19	20	21,976	20	21	42,483	21	22	24,003

Start point	End point	Segment length	Start point	End point	Segment length	Start point	End point	Segment length
22	23	0,151	23	24	0,393	24	25	1,591
25	26	1,263	26	27	0,715	27	28	0,719
28	29	0.7	29	30	0,654	30	31	0,697
31	32	0,413	32	33	1,128	33	34	10,106
34	35	1,208	35	36	20,726	36	37	4,078
37	38	3,177	38	39	6,161	39	40	4,162
40	41	0,994	41	42	2,726	42	43	2,323
43	44	5,578	44	1	15,109			

** Segment lengths are determined in the Stereo 70 projection plane and are rounded to 1 millimeter.

*** The distance between the points is made up of cumulative segments that are smaller than the value of 1 millimeter.